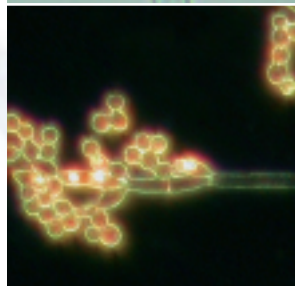
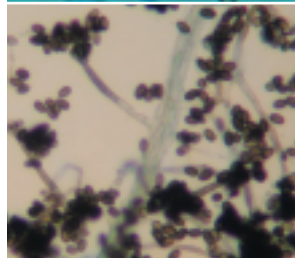
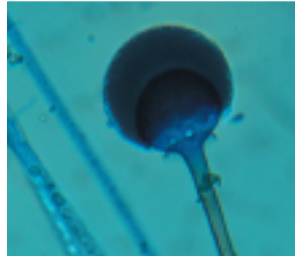
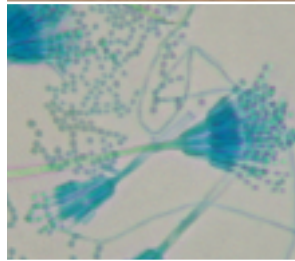
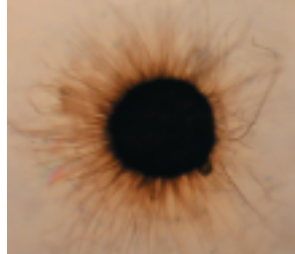
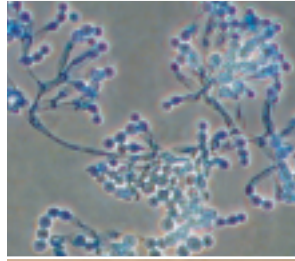
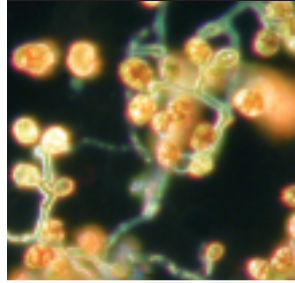


## Top Quality Analysis, Responsive Service, Competitive Pricing

Mould Analysis | Bacterium Analysis | Dust Characterization  
Equipment Rental/Sampling Supplies





## ABOUT US >>

---

EMC Scientific Inc. is a laboratory specializing in building-related environmental microbiology. We are committed to providing top quality professional mould analysis and other services.

Fungi (including mould) exist virtually everywhere on the planet. Some moulds (such as *Aspergillus* and *Stachybotrys* species) can be pathogenic and/or toxigenic. Mould growth in buildings may cause adverse health effects on some occupants. Our mission is to continually provide the highest quality analysis services and solutions in the industry that will subsequently assist in providing safe and healthy environments.

At present, there is no government regulation or certification for environmental microbiology laboratories. The most reliable qualifications of an environmental microbiology laboratory are its personnel's qualifications, training and QA/QC programs.

EMC Scientific Inc. is proud to have **experienced PhD mycologists** to examine your samples; to have outstanding analysis protocols, quality assurance and quality control programs; to provide **accurate** and **reliable** results in a timely manner to our clients.

EMC laboratory participates in the American Industrial Hygiene Association's Environmental Microbiology Proficiency Analytical Testing program (EMPAT, Lab# 174080).

We serve the following:

- IAQ and environmental consultants and specialists, industrial/occupational hygienists
- Mould remediation contractors and mould inspectors
- Hospitals, other health care facilities and public health departments
- Schools, colleges, universities, government departments and other laboratories
- Engineering and construction firms
- Insurance, real estate and legal professions
- Building owners and commercial property managers

## SERVICES >>

---

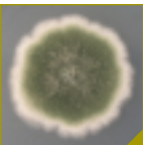
EMC Scientific offers:

- **Mould analysis (both viable and non-viable) for all types of environmental samples**
- **Bacterium analysis (sewage contamination/clearance rapid screen test, etc.)**
- **Fiber and dust characterization**
- **Equipment rental and sampling supplies**

Whilst maintaining our high standard of quality, a primary focus for EMC is providing analysis results in a timely manner. Further to the standard services, EMC laboratory provides **rush** (24 hr), **super-rush** (4 hr), and **weekend/holiday** analysis to meet the needs of our clients. For time-critical situations, EMC is ready to provide **on-site sample analysis**.

In addition, the laboratory is supported by microbial consulting experts who when required, are happy to help our clients interpret laboratory analysis results, assist in developing sample strategies and provide various industry-specific training. We do not provide consulting services in this regard.





## MOULD ANALYSIS >>

---

### Spore Trap Analysis

Sample analysis will include identification to genus or group of all fungal spores present, quantification to spores per cubic meter of air (spores/m<sup>3</sup>), and general assessment of fungal fragments and non-fungal debris.

**Sample types:** Air-O-Cell, Micro 5, LARO, BioAire, PCM, MCE cassettes, etc.

**Turnaround available:** **4 hour-rush** (reported within 4 hours from receipt of samples, samples will usually be processed for analysis immediately upon receipt), **24 hour-rush**, and **standard** (2-4 business days).

### Direct Microscopic Examination

Samples will be examined under the microscope for mould growth. Mould types present on the samples will be identified and reported in rank order.

**Sample types:** bulk (drywall, ceiling tile, carpet, wood, insulation, etc.), tape-lift, swab, wipe, dust (micro-vacuum dust), etc.

**Turnaround available:** **4 hour rush** (reported within 4 hours from receipt of samples, samples will usually be processed for analysis immediately upon receipt), **24 hour-rush**, and **standard** (2-4 business days).

### Culturing Analysis

Samples will be incubated at 25°C or at certain specified temperatures.

Mould types grown will be identified to genus or species level per client requests.

**To genus level:** all moulds will be identified to genus (to species for *Aspergillus*) where possible.

**To species level:** all moulds will be identified to species level where possible.

**Turnaround time:** **7-10 days** (to genus level), **10-15 days** (to species level).

**Air Samples:** (Andersen, RCS, BioCassette) Analysis includes identification to genus and/or species level, and quantification to colony forming unit (CFU) per volume of air (CFU/m<sup>3</sup>).

**Contact plates:** Analysis includes identification to genus and/or species level, and quantification to CFU per square area.

**Swab, dust, bulk samples (quantification analysis):** Analysis includes growth of moulds on suitable media, identification to genus and/or species level as required, and quantification to CFU/per square area or per weight.

**Swab, dust, bulk samples (non-quantification analysis):** Analysis includes growth of moulds on suitable media, and identification to genus and/or species level.



## BACTERIUM ANALYSIS >>

---

### Sewage Contamination/Clearance Rapid Screen Test

The presence/absence of total coliform/*E.coli*, and Enterococci (a subgroup of Streptococci) associated with fecal and/or sewage contamination will be determined.

**Sample types:** swab, bulk, wipe, water, dust, etc.

**Turnaround available:** rush (1 day), standard (2 days).

### Total Bacterium Count

Total number of colonies will be determined and reported as per volume, per square area or per weight.

**Sample types:** air samples (Anderson, RCS, etc.); contact plate, swab, bulk, wipe, water, dust, etc.

**Turnaround time:** 5-7 days.



## FIBER AND DUST CHARACTERIZATION >>

---

Fiber types, total pollens and dust debris (such as skin cells, soot, rust fragments, mites, insect parts, etc.) will be identified and/or quantified.

**Sample types:** air samples (Air-O-Cell, Micro 5, LARO, BioAire, PCM, MCE cassettes, etc.), dust, tape-lift, bulk, etc.

**Turnaround available:** 4 hour rush, 24 hour-rush, and standard (2-4 business days).



## EQUIPMENT RENTAL >>

---

The following pumps and sampling apparatus are available for rent from EMC:

### SKC QuickTake 15 Kit

These pumps are ideal for the collection of spore trap samples. The kit includes carrying case, the pump itself, sampling wand, tripod and rotameter.

### High Volume Vacuum Pump

This versatile pump can be used for many sample applications including collection of spore-trap samples, PCM samples, dust samples and viable samples (when used in combination with single-stage impactor).

### Single Stage Impactor

The single stage impactor is used for collecting culturable/viable samples (Andersen samples). The impactor is used in combination with agar plates (growth media).



## SAMPLING SUPPLIES >>

---

Cassettes, agar media, swabs, tape-lifts, etc.

For further information and/or services not mentioned, please contact us:

EMC Scientific Inc.  
5800 Ambler Drive  
Suite 100  
Mississauga, ON L4W 4J4

**p** 905.629.9247 | **f** 905.629.2607 | **tf** 1 866 746.1730 | **e** info@emcscientific.ca | **w** www.emcscientific.ca